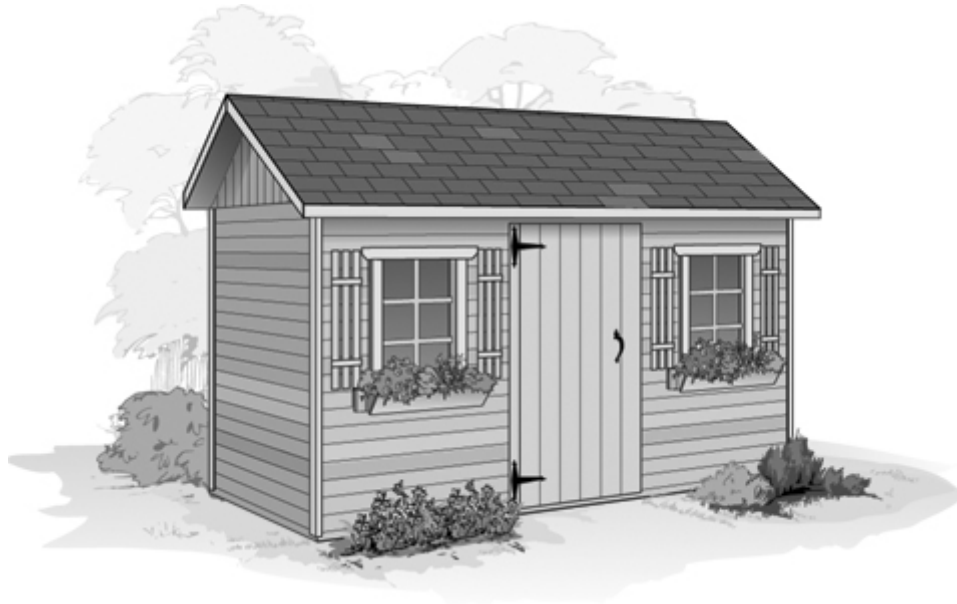


SUMMERWOOD CONSTRUCTION PLANS

Master Plan For Highlands 16' x 24'



What's Included in This Document

This document takes you step by step through all the stages required to build 'the shell' of your structure. It provides many helpful tips and hints, gives you a detailed list of required materials, and of course, offers a master cut list and step by step instructions and drawings to make building your structure easy and fun. It does not cover door, window, or any other modifications or options.

Use in Conjunction with these Other Documents

- Important general information for all sizes and styles - advice, details on customer care
- Option/Modification Instructions - material requirements, cut lists, and instructions for options and accessories (ie doors, windows, etc)
- Assembly Instructions – how to put it all together
- Instructional Video – if you really don't like to read

Construction Plan



<i>Required Supplies</i>	1
<i>Material Choices and Substitutions</i>	2
<i>Master Material Cut List</i>	3
<i>Step by Step Instructions and Drawings</i>	
✂ Model.....	4
✂ Elevation.....	5
✂ Frame Assembly.....	6
✂ Wall Frame Plan.....	7
Front Wall A.....	8
Front Wall B.....	9
Back Wall A.....	10
Back Wall B.....	11
Right Wall.....	12
Left Wall.....	13
✂ Wall Details	14
✂ Roof Layout.....	15
✂ Truss Details.....	16
✂ Trim Details.....	17

> **START HERE**

This Plan contains the following components:

1. Required Supplies List

This is a master list of all the supplies that you will require to complete your project. Be sure to refer to the ‘Materials Choices and Substitutions’ info below when considering your requirements.

*Note: The required supplies list ONLY includes the materials required to build your structure’s shell. Be sure to carefully amalgamate the supply lists of any of the options and modifications you selected (doors, windows etc.) before you complete the list. If you have purchased the **extra overhang** option this is particularly important due to the increased length of all studs.*

2. Master Material Cutlist

The entire list of dimensioned components is provided in this section. It is divided into four sections: floor, trim, roof, and walls, to make it easy to follow. It also outlines how all the cut components relate to the required supplies list.

3. Step-By-Step Instructions and Drawings

These are the actual instructions that take you through the cutting of each component, broken down into logical stages. Illustrations are presented to clearly indicate where each component is utilized. Frame details of each section are provided to assist you in bringing your materials and cut list into perspective. Please pay close attention to any notes or tips provided by the detailed drawings.

Note: If necessary, these drawings are generally acceptable as part of a permit application.

Important

General Construction Notes (to be considered throughout this document)

- Wall studs are placed every 16” on centre (OC)
- All dimensions are in inches unless specified otherwise
- When laying out walls that contain doors/windows, mark the spaces for the doors/windows first, then place the studs outside the window space so that they are spaced 16” OC or less.

Glossary of Construction Terms:

- **Item #:** identifies each material component and where it is located on the drawings.
- **Item Name:** defines what the material is being used for.
- **No. of Pcs.:** the number of pieces of a certain material that are required in your unit.
- **Cut Lgth:** the actual length that a piece of material is to be cut to.
- **Size:** the quoted lumber size (i.e. 2 x 6 etc.).
- **Material:** the type of the material to be used for each part specified.
- **Qty.:** the number of units required of each item.
- **Lgth.:** The purchase length of the material.
- **Pcs./Lgth:** This is the number of pieces that can be cut from each purchase length.

REQUIRED SUPPLIES: HIGHLANDS 16'x24' WITH EXTRA OVERHANG

QTY	UNIT	SIZE	MATERIAL	LGTH.	NOTES
7	ea	1x6	Cedar	10'	
6	ea	1x6	Cedar	12'	
12	ea	1x6	Cedar	14'	
3	ea	1x6	Cedar	16'	
4	ea	2x4	Spruce	8'	
1	ea	2x4	Spruce	10'	
8	ea	2x4	Spruce	14'	
70	ea	2x6	Spruce	8'	
4	ea	2x6	Spruce	12'	
4	ea	2x6	Spruce	14'	
4	ea	2x6	Spruce	16'	
13	ea	2x6	Spruce	18'	
26	ea	2x8	Spruce	12'	
25	ea	2x8	Spruce	16'	
2	ea	2x6	PT	12'	
2	ea	2x6	PT	14'	
2	ea	2x6	PT	16'	
64	sq.ft.	5/8"	Spruce Plywood		2 - 4x8 sheets (truss gussets)
521	sq.ft.	1/2"	Spruce Plywood		17 - 4x8 sheets (roof sheathing)
772	sq.ft.	1/2"	O.S.B.		25 - 4x8 sheets (wall sheathing)
772	sq.ft.		Typar		Weather Membrane (Housewrap to prevent moisture)
772	sq.ft.		Siding		Siding of your choice
24	bndles		Shingles		Asphalt Shingles
12	lbs	3"	Framing Nails		Galvanized Nails
22	lbs	2"	Siding Nails		Stainless steel for cedar Galvanized for Canexel
10	lbs	1"	Roofing Nails		Galvanized Nails
1	lb	1"	Screws		Zinc Plated Screws
8	lbs	3"	Screws		Zinc Plated Screws

The information given in the "NOTES" section are details on what Summerwood uses. If you are unable to obtain the same specifications you may find a suitable substitute.

Material Choices & Substitutions

Before you purchase the required materials, please read the following:

CHOICES

- **SIDING:** We generally use two types of siding in the production of our products: cedar channel siding and Canoxel® wood fiber siding.
 - The cedar siding is 1" x 8" x 5/8 western red cedar channel Siding with either the rough or smooth side out. It covers approximately 6" per row and is a lovely material that has fairly widespread distribution.
 - The Canoxel wood fiber siding is 1" x 12" and it covers approximately 11" per row. It has a 15-year warranty and comes in a compelling range of colors with virtually no required maintenance.

Since there are many types of siding available, the only dimension you need to concern yourself with is the required square footage. If you decide to go with a vertical siding, and the plan you chose has horizontal, you will need to beef up the framing accordingly. Your local building supply store sales person will be more than happy to provide you with all the advice you need.

- **WALL SHEATHING:** Our cabins and garages include ½" thk. OSB wall sheathing and a weather membrane (house wrap) to prevent moisture in case you decide to finish the inside of your unit.
- **SHINGLES:** We offer both cedar and asphalt shingles with our kit products, but there are other choices. Whatever you choose, be sure to follow the installation instructions closely. Please refer to xxxxxx on our website to determine the quantity of shingles that you will require.

For more information regarding any of the materials listed above, please visit the specifications section of our website.

UPGRADES

Take comfort in the knowledge that the materials in our plan are chosen for their appearance, versatility, and structural integrity. There are, however, alternatives. Below are upgrades that we offer in our kits, that you may also wish to consider when compiling your shopping list. (See the options section of our site for more pictures and details).

Floor

- **Concrete Pad:** Our garages are generally built on a concrete pad. Any type of floor upgrade is not recommended.

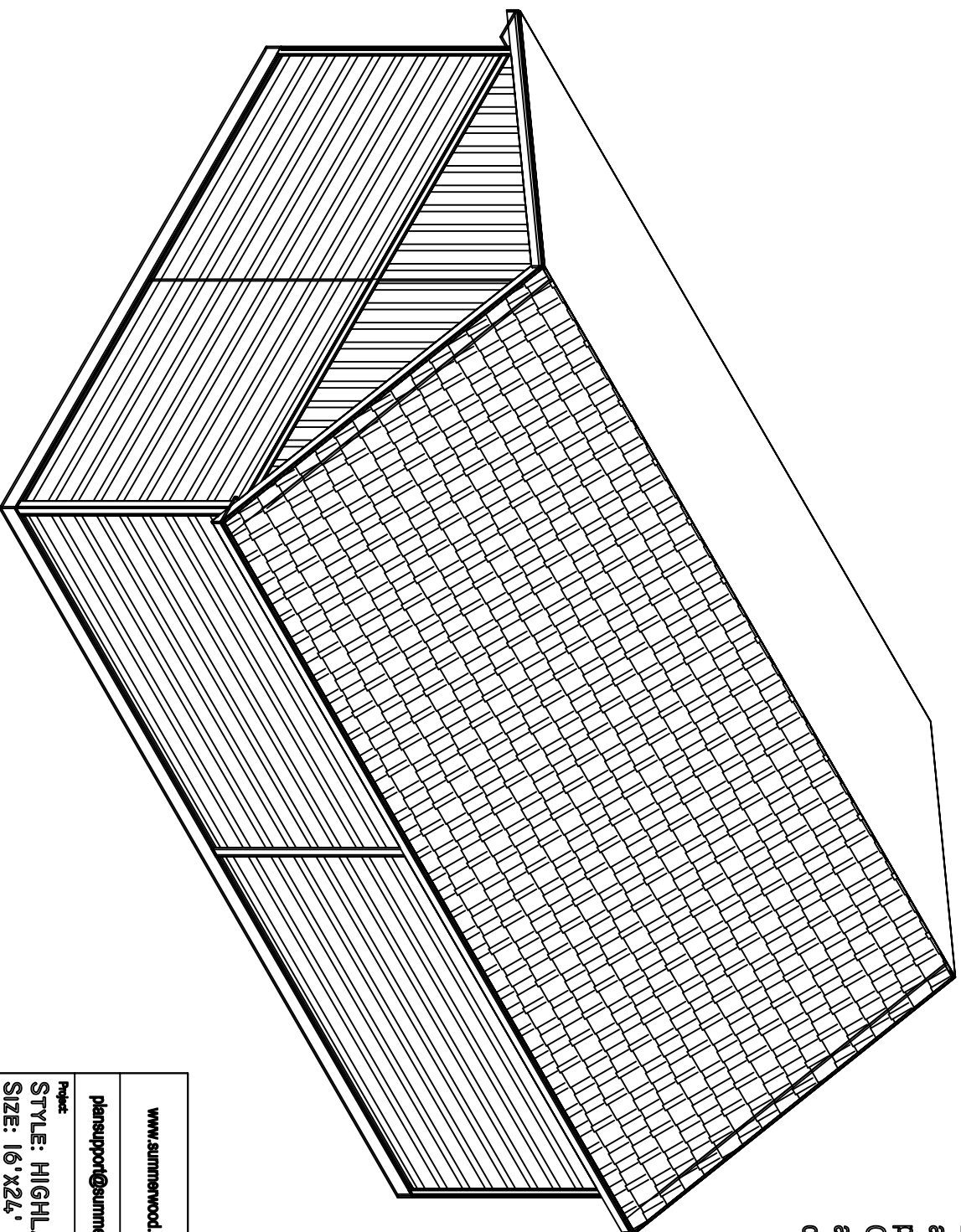
Wall

- **Studs:** We use 2 x 6 spruce studs. If you love cedar or pine, consider upgrading.
- **Wall Plates:** We use 2 x 6 spruce wall plates, however, if you intend on building your shed on a concrete pad instead of our wooden floor you will need to replace the bottom wall plates with Pressure Treated (P.T.) Material. Garages would fall under this category.

Roof

- **Sheathing:** We use 4 x 8 x 1/2" spruce plywood sheets. You may want to upgrade to fir plywood, or consider a T & G pine or cedar for a more finished appearance.
- **Trusses and rafters:** We use spruce (dimensions vary depending on size and style). Other materials such as pine or cedar may be preferred.

3D PROFILE: 16'x24' HIGHLANDS SHELL

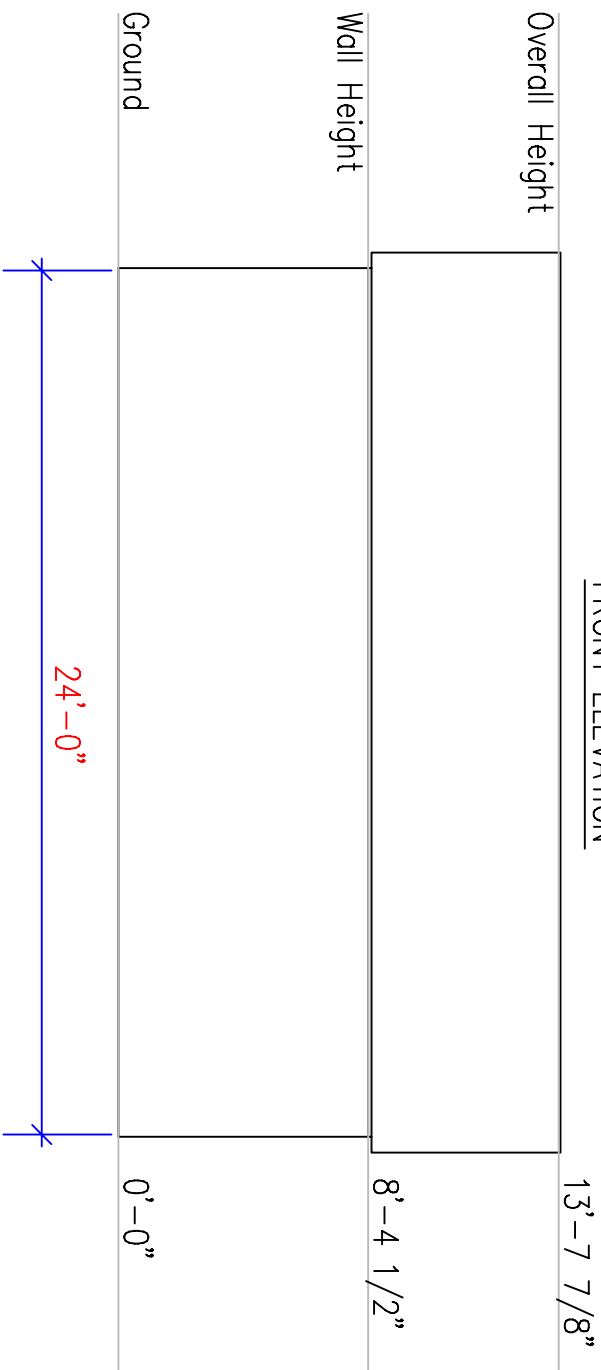


Notes:
This is a three dimensional view of the building's shell.
Doors and windows are not shown as their placement may vary from project to project.
Our garages are generally built on a concrete pad, it therefore contains no floor instructions.

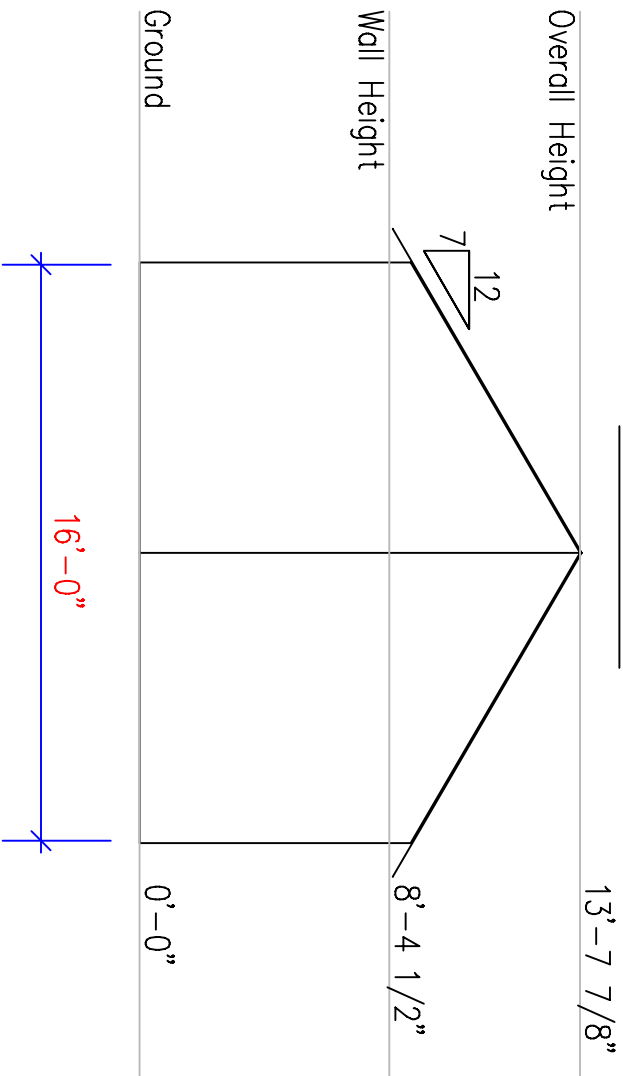
www.summerwood.com		Summerwood PRODUCTS A Division of Summerwood Outdoor	
Project: plansupport@summerwood.com			
Project: HIGHLANDS			
SIZE: 16'x24'			
3D PROFILE			
Scale: 1/4" = 1'	Version No.: 1.01	Item No.:	HLND 16X24

ELEVATIONS

FRONT ELEVATION



SIDE ELEVATION

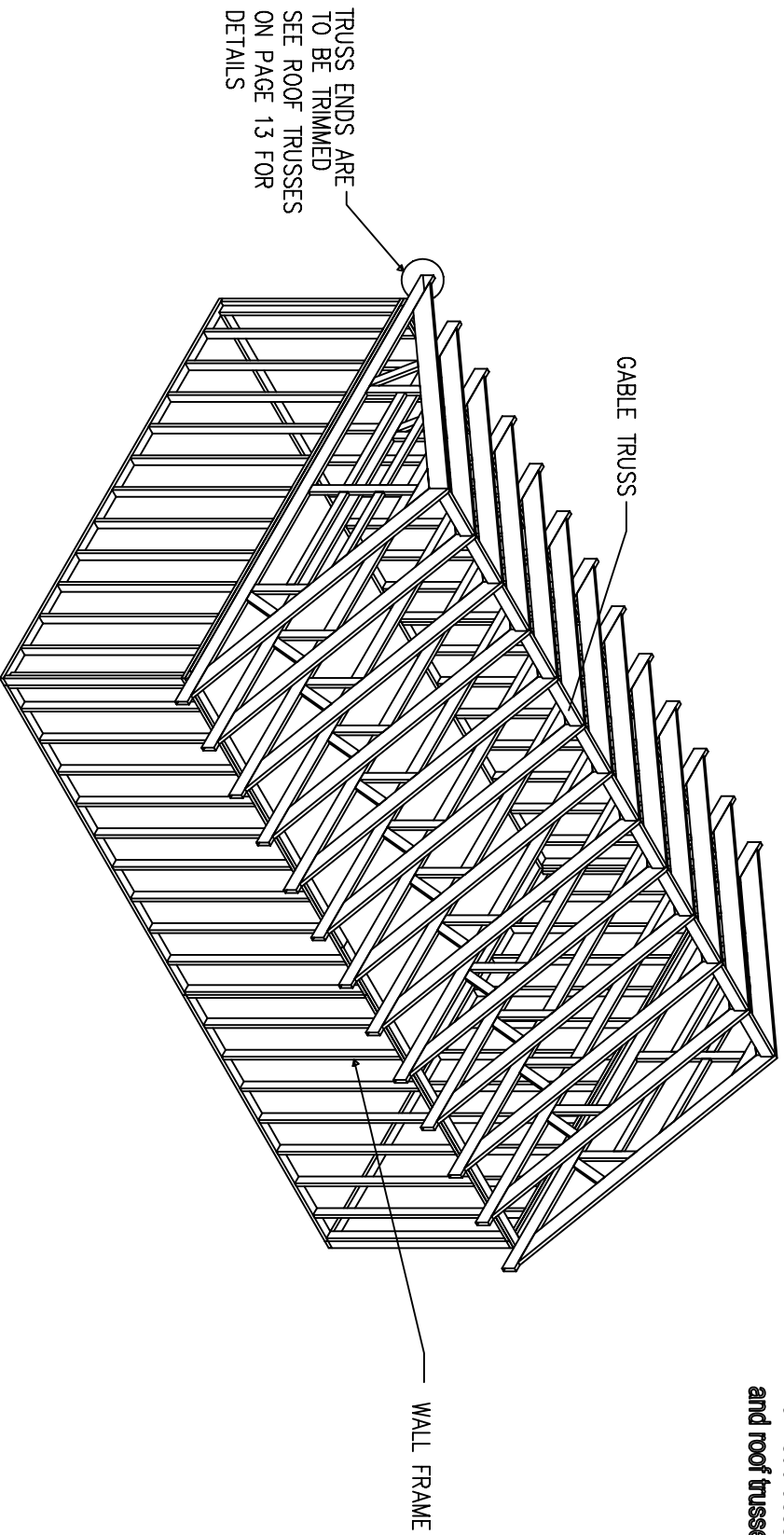


Notes:
These elevations indicate the overall dimensions of the unit when assembled. This drawing is useful for obtaining building permits and for landscape planning.

www.summerwood.com		Summerwood PRODUCTS A Division of Summerwood Outdoor	
plansupport@summerwood.com			
Project: STYLE: HIGHLANDS SIZE: 16'X24' ELEVATIONS			
Scale:	Version No.:	Item No.:	
3/16"=1'	1.01	HLND 16X24	

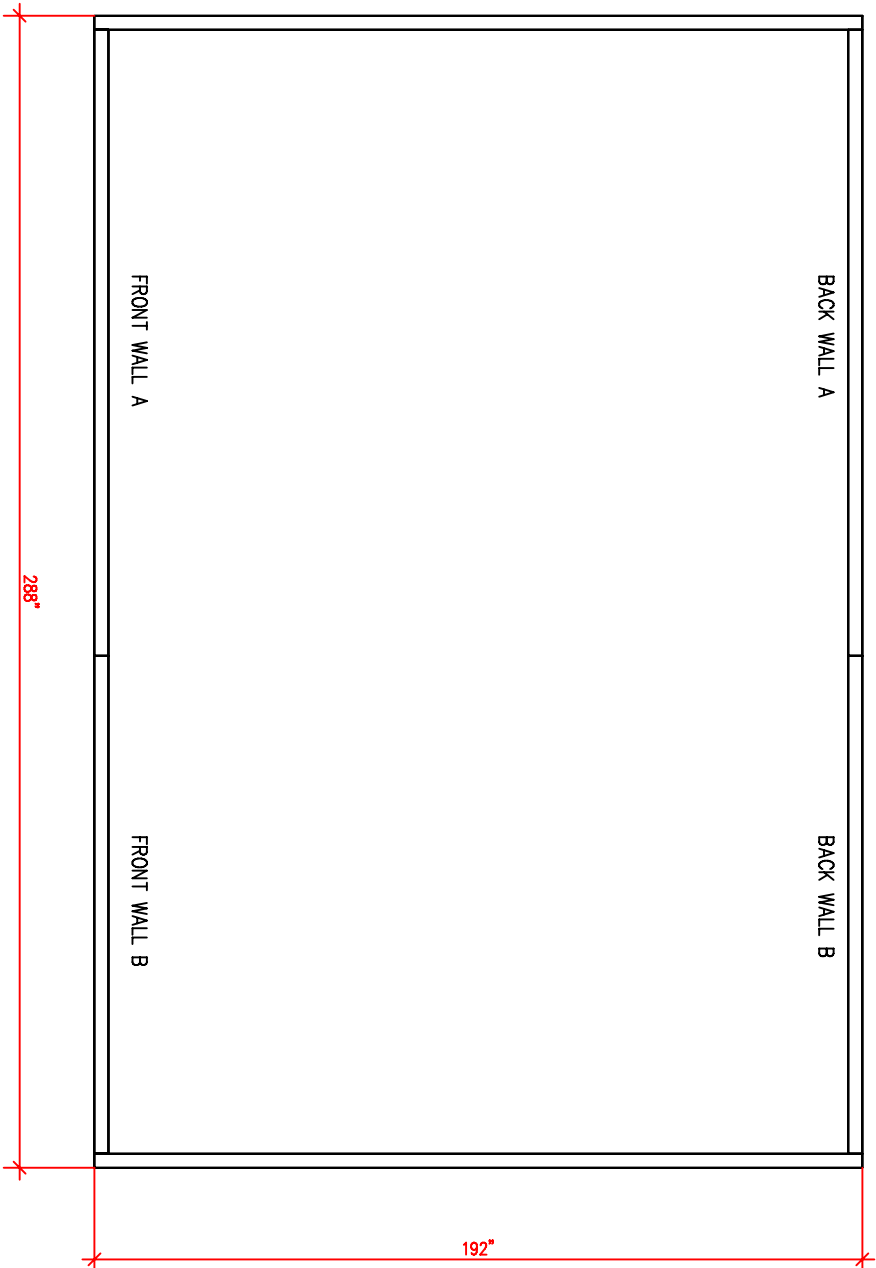
FRAME ASSEMBLY

Notes:
 This is a three dimensional view of the framework of your building. It is meant to illustrate how the two main sub-assemblies (wall frame and roof trusses) come together.



www.summerwood.com		Summerwood PRODUCTS A Division of Summerwood Outdoor	
Project: plansupport@summerwood.com			
STYLE: HIGHLANDS SIZE: 16'X24' FRAME ASSEMBLY			
Scale:	3/16"=1'	Version No.:	1.01
		Item No.:	HLND 16X24

WALL FRAME PLAN



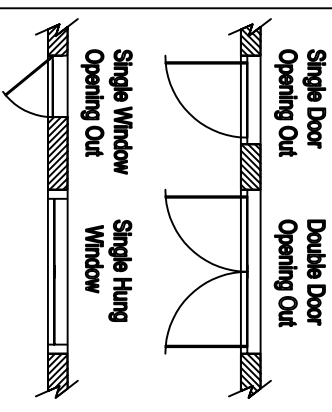
Notes:

This drawing shows the footprint of the building and is useful for obtaining building permits. Window and door openings have been left out as details may vary from project to project.

Indicate the size and location of any openings on this floor plan by hand. If you add any interior partitions, they should be shown here as well.

Hint:

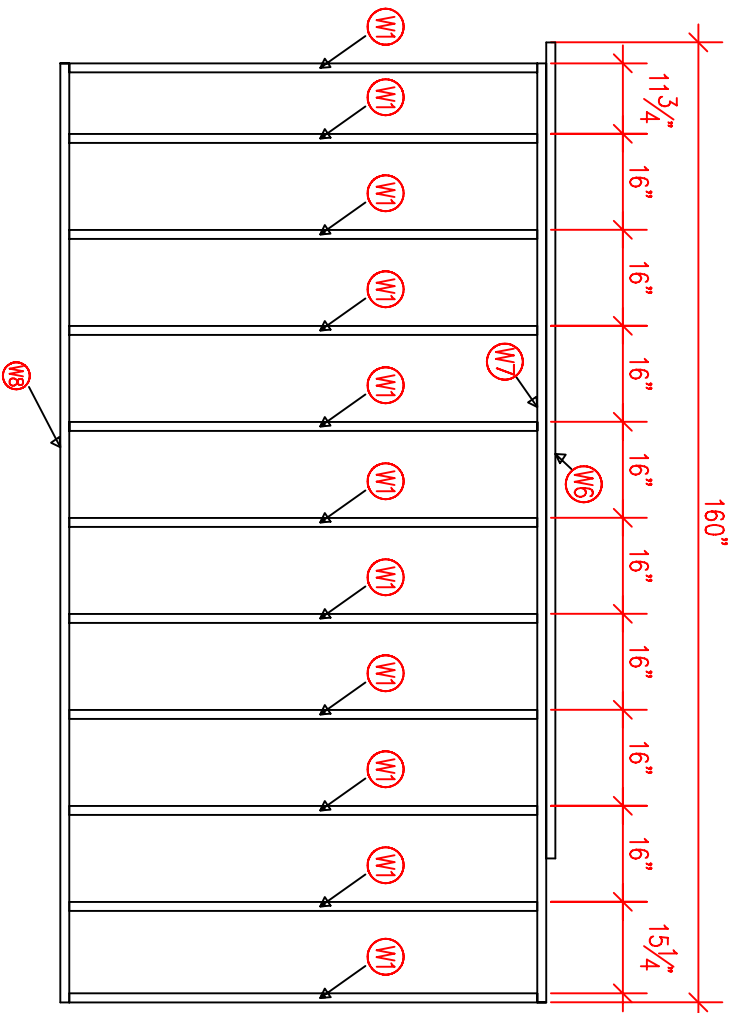
The following symbols can be added to this drawing by hand to indicate the location of doors and windows.



www.summerwood.com		Summerwood PRODUCTS A Division of Summerwood Outdoor	
plansupport@summerwood.com			
Project: STYLE: HIGHLANDS SIZE: 16'X24' WALL FRAME PLAN			
Scale: 1/4"=1'	Version No.: 1.01	Item No.: HLND 16X24	

FRONT WALL FRAME DETAILS

FRONT WALL A



Notes:
 This drawing illustrates how the front wall is assembled. Note that the double top plates are not installed until all of the wall assemblies have been erected.

The walls have been split in such a way to accommodate siding that is cut in half and meet at the centre. A stud should line up with the centre of the wall.
 If the wall has a door the wall should be split at one end of the door frame. Any siding above the height of the door should be joined at the centre of the wall for uniformity.

REQUIRED COMPONENTS

ITEM #	QTY	MATERIAL	DESCRIPTION	LENGTH
W1	11	2 x 6 Spruce	Stud	8'-0"
W6	1	2 x 6 Spruce	Double Top Plate	11'-4"
W7	1	2 x 6 Spruce	Top Plate	13'-0"
W8	1	2 x 6 PT	Bottom Plate	13'-0"

www.summerwood.com

Summerwood PRODUCTS
 A Division of Summerwood Outdoor

plansupport@summerwood.com

Project:

STYLE: HIGHLANDS

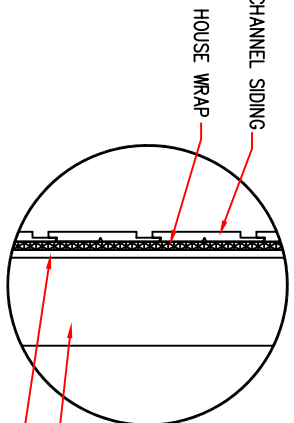
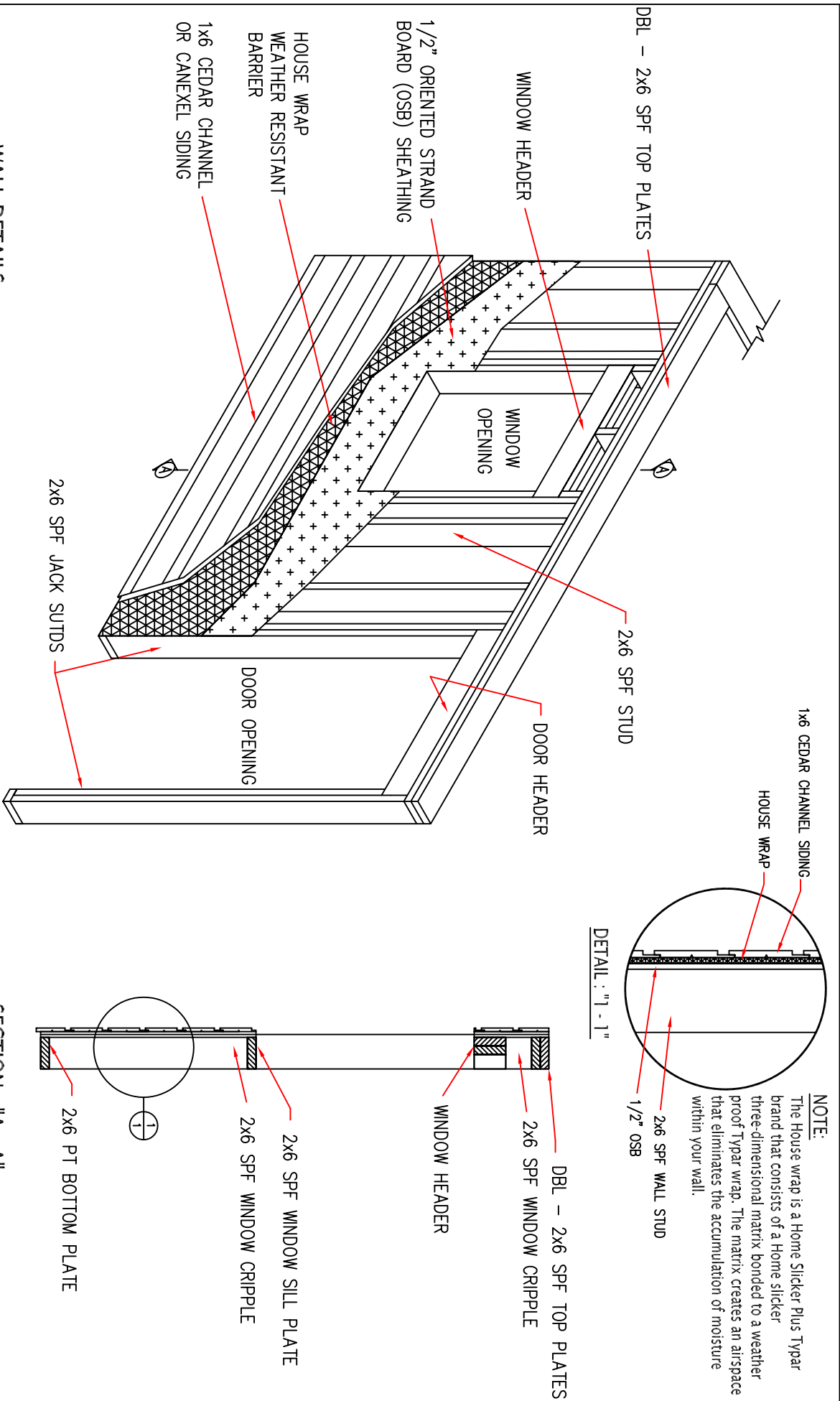
SIZE: 16'x24'

FRONT WALL (A) FRAME DETAILS

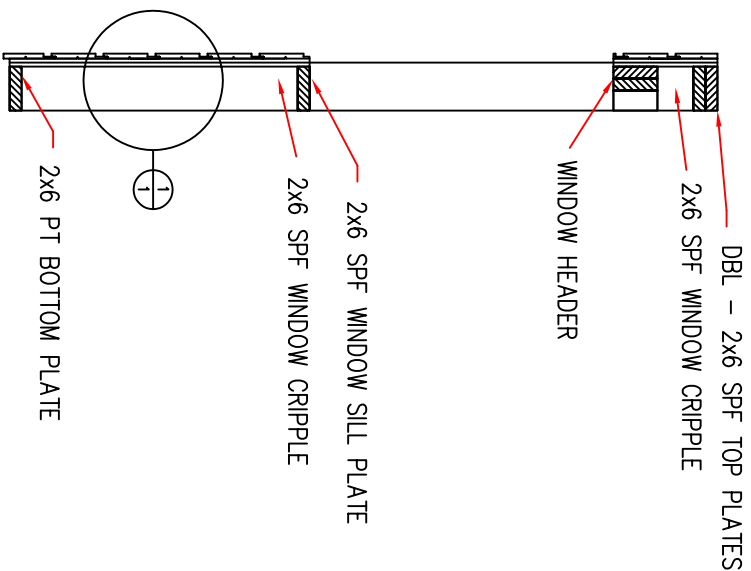
Scale:
 3/8"=1'

Version No.:
 1.01

Item No.:
 HLND 16X24



NOTE:
 The House wrap is a Home Slicker Plus Typar brand that consists of a Home slicker three-dimensional matrix bonded to a weather proof Typar wrap. The matrix creates an airspace that eliminates the accumulation of moisture within your wall.



WALL DETAILS:

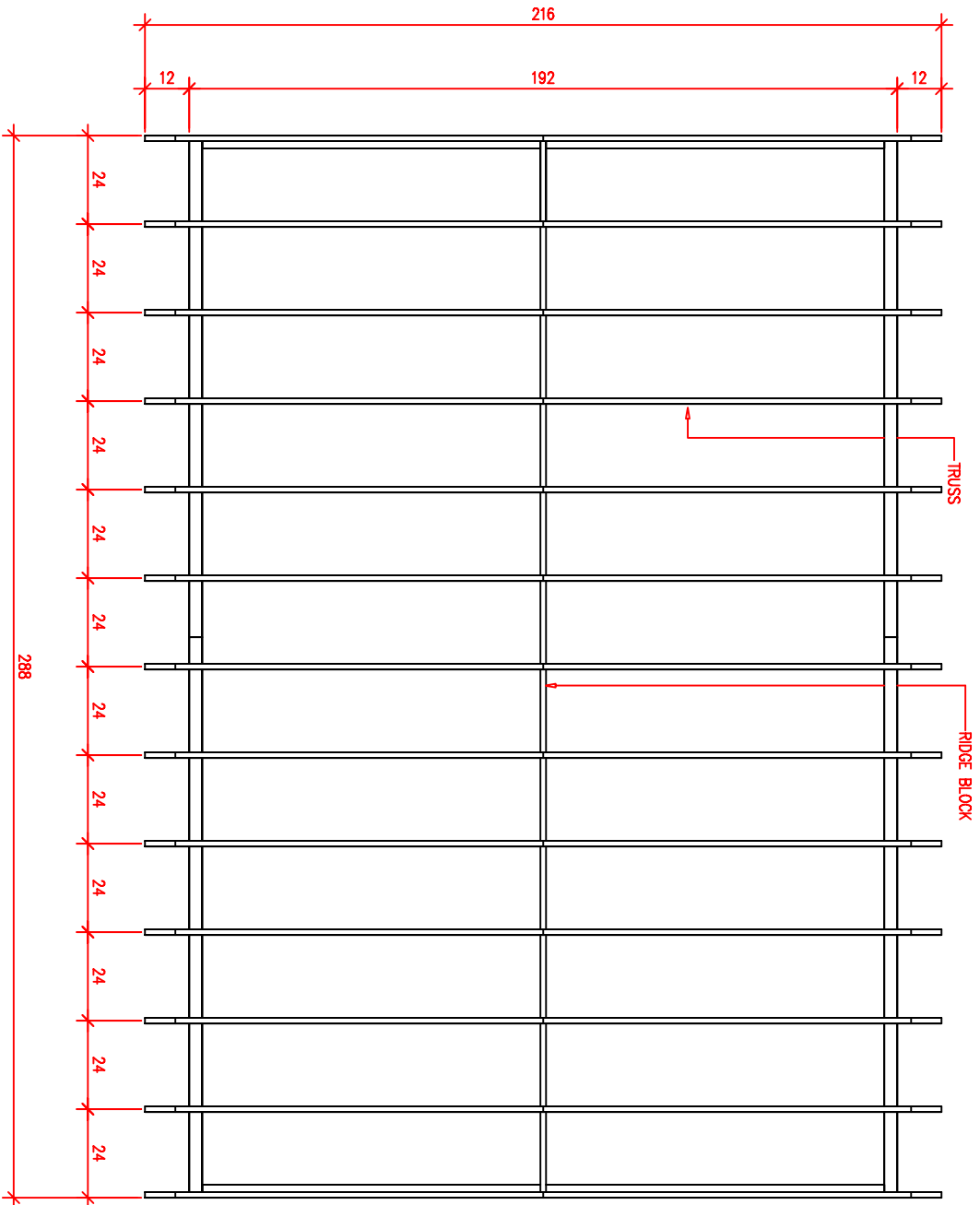
- ALL WALLS 2x6 SPF STUDS @ 16" O.C.
- 2x6 SPF DOUBLE TOP PLATES
- 2x6 PT BOTTOM PLATE
- 1/2" OSB SHEATHING
- 1x6 CEDAR CHANNEL OR CANEXEL SIDING
- HOUSE WRAP BETWEEN OSB SHEATHING AND SIDING TO WEATHERPROOF
- HOME SLOKER PLUS TYPAR USED ONLY FOR CEDAR SIDING (SEE DETAIL "1-1")
- PLAIN TYPAR WRAP USED FOR CANEXEL SIDING
- ALL FASTENERS NON CORROSIVE

Summerwood PRODUCTS
 A Division of Summerwood Outdoor
 735 Progress Avenue
 Toronto, Ontario
 M1H 2M7
 design@summerwood.com
 www.summerwood.com

Drawn By: TJS
 Checked By: DMC
 Project:
TYPICAL WALL DETAILS
 Scale: 1/2" = 1'

Date: Oct 13, 2004
 Notes:
 THIS IS A TYPICAL WALL LAYOUT OF OUR GARAGE SERIES. DOOR/WINDOW HEADERS VARY DEPENDING ON THE SIZE AND STYLE OF DOOR/WINDOW.

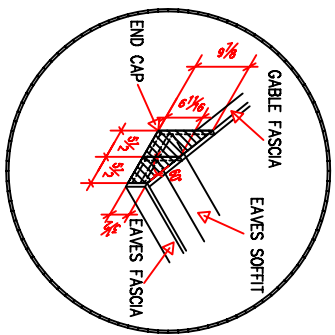
ROOF LAYOUT



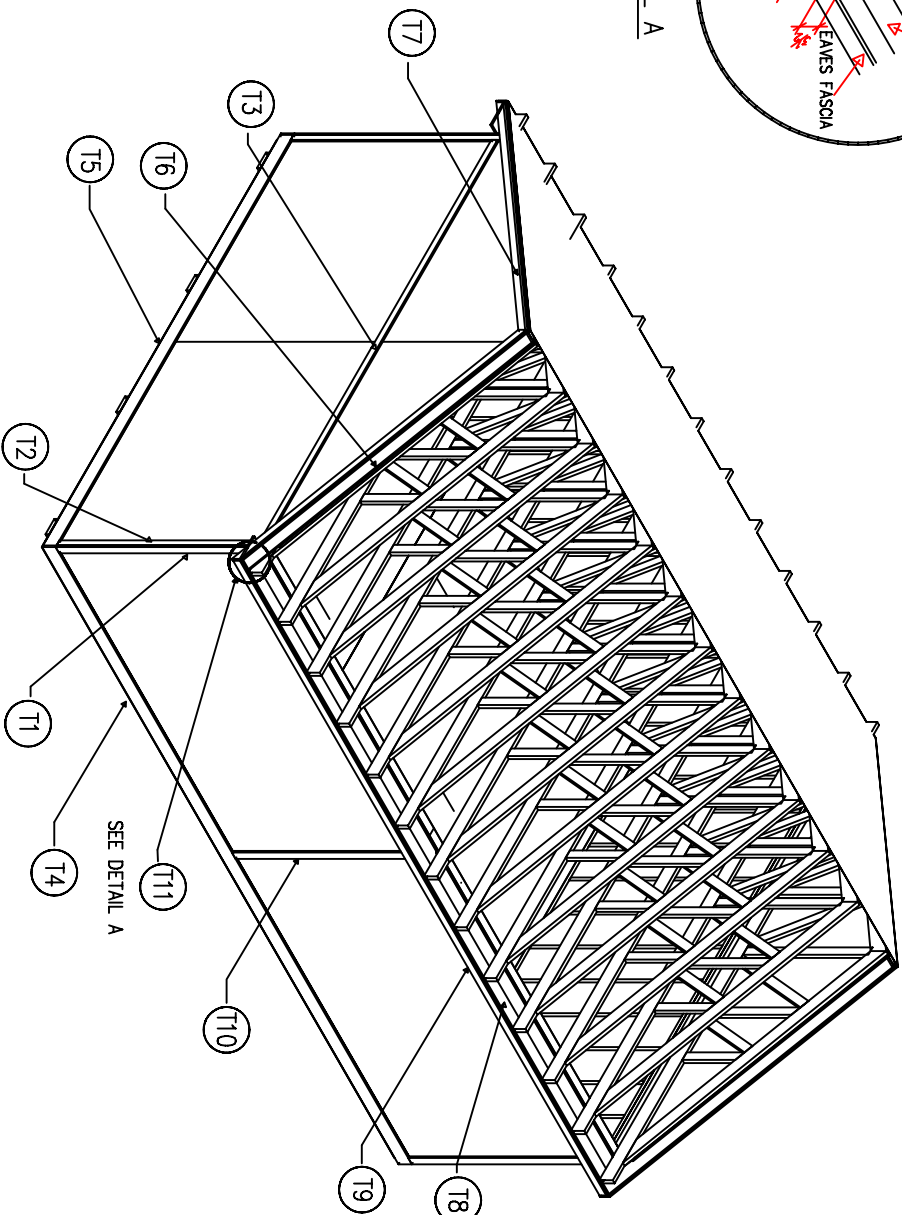
Notes:
 This drawing illustrates where the trusses are situated. The wall frame is included to use as a reference when positioning the trusses. The following page provides details on the truss.

www.summerwood.com		Summerwood PRODUCTS A Division of Summerwood Outdoor	
plansupport@summerwood.com			
Project: STYLE: HIGHLANDS SIZE: 16'X24' ROOF LAYOUT			
Scale: 1/4" = 1'	Version No.: 1.01	Item No.: HLND 16X24	

TRIM DETAILS



DETAIL A



Notes:
 This drawing identifies all of the trim parts necessary for your building. The master material cut list will provide further information on how each piece is cut. It is recommended that you leave each piece slightly longer to ensure a proper fit and to account for shrinkage in the wood.

Order of Installation:

1. Soffits
2. End Caps
3. Fascia
4. Skirts
5. Corners
6. Gable trim strips

REQUIRED COMPONENTS

ITEM #	QTY	MATERIAL	DESCRIPTION	LENGTH
T1	4	1" x 6" Cedar	Front/Back Corner Trim	8'-5 1/4"
T2	4	1" x 6" Cedar	Gable Corner Trim	8'-8 1/8"
T3	2	1" x 6" Cedar	Gable Trim Strip	15'-8 3/4"
T4	4	1" x 6" Cedar	Front/Back Wall Skirt	12'-3"
T5	4	1" x 6" Cedar	Gable Wall Skirt	8'-0"
T6	4	1" x 6" Cedar	Gable Soffits	10'-5"
T7	4	1" x 6" Cedar	Gable Fascia	10'-7"
T8	8	1" x 6" Cedar	Eave Soffits	12'-6"
T9	4	1" x 6" Cedar	Eave Fascia	12'-6"
T10	1	1" x 6" Cedar	Back Wall Trim Strip	8'-5 1/4"
T11	8	1" x 6" Cedar	End Cap	0'-10"

<p>www.summerwood.com</p> <p>plansupport@summerwood.com</p> <p>STYLE: HIGHLANDS</p> <p>SIZE: 16'X124'</p> <p>TRIM DETAILS</p>	<p>Summerwood PRODUCTS</p> <p>A Division of Summerwood Outdoor</p> <p>Version No.: 1.01</p> <p>Item No.: HLND 16X24</p>
--	--