

Palmerston



The following pages contain specific instructions on how to assemble your new Summerwood plans. Extensive diagrams, pictures and explanations are offered to make it simple (and fun) for those with little or no experience with a project of this nature. Please also take the time to review the video which is included. It provides useful tips and will save you time in the long run.

Have fun, and please don't forget to send a photo when you are all done!

Summerwood Plan Assembly Instructions



Table Of Contents

1. Assembling floors
2. Wall framing and erection.
3. Truss assembly and roof detail.
4. Trim assembly and finishing.
5. Added options.

All details concerning windows and doors are included with the associated window and door packages.

Summerwood Plan Assembly Instructions



1. Floor Assembly Instructions

The following instructions provide methods to install all of our 4 sided garden structure floors. Floors may vary in sizes and material, but the construction procedure remains the same.



The following pages contain explicit instructions on how to assemble your Summerwood Cabana. Extensive diagrams and complete explanations are offered to make assembly easier.

Summerwood Plan Assembly Instructions



3.

Important! Once the basic frame has been nailed, run your tape measure from opposite corners, if the measurement is equal, your floor is square. If not, push/pull corners until measurements are equal.



4.

After you've squared your floor place your pressure treated 2x6 approx. 6" from the sides and any additional runners center evenly across the width of the floor. Use 3" nails to secure to 2x4



Note: Do not nail into joists placed every 48" They must be able to move slightly to accommodate your plywood flooring.

Summerwood Plan Assembly Instructions



6.

Typically, you would want your floor to rest on a solid foundation. This can be achieved by pouring concrete footings or by using the easier and more cost efficient patio stones. The stones are placed under the 2x6, usually 3' apart. Stones can be purchased locally. (E.g.: if your pressure treated lumber is 12' long, 3-4 patio stones will work, this is per runner.)
Check local codes



7.

Summerwood Plan Assembly Instructions



The following pages contain explicit instructions on how to assemble your Summerwood Cabana. Extensive diagrams and complete explanations are offered to make assembly easier.

Wall Assembly Instructions

Lay all your studs into one pile, separate your top and bottom plates, and divide all your siding into piles according to lengths. Your floor can serve as a level work surface to build your walls on.

1.

Summerwood Plan Assembly Instructions



Use the drawings provided to locate window and door framing details. Take into consideration where you want your doors and windows to be located. Always remember that the studs should not exceed 16" on center. Take your time to measure and accurately mark your stud, window and door locations. Use two 3" nails for each joint.



2.

Measure from corner to corner, for your wall to be true square the measurement should be equal. Its important to ensure your walls are square before applying siding, if not this may cause problems later on.



3.

Summerwood Plan Assembly Instructions



The first wall section to go into place is always the back wall, do not fasten yet. Use scrap wood as a brace to hold up wall, if someone is available to hold the wall, even better. Place side wall, flush with back wall, the corner **must** be tight, use a clamp or have someone push joint as tight as possible, secure to each other using 3" screws approx. every 8".



14.

Repeat above with other side wall. The last piece to go in to place is Your front wall. Insert the front Wall in place and again apply Plenty of pressure to the corners When fastening with screws, Squeeze the joints as tight as Possible. Now all your walls should Be fastened to one another, but Should not be tacked to the floor Quite yet.



15.

Before fastening the walls to your floor, you want to check them for square ness, this is done the same way your floor was, measure diagonally from corner to corner, if both measurements are equal, your building is square, if not. Push walls to create an equal measurement once you have done this begin fastening the walls to the floor using 3" screws approx. every 8"



3. Gable Roof Assembly

The following instructions provide methods to install all of our Cabana gable Roofs. Roofs may vary in sizes and material, but the construction procedure remains the same.



The following pages contain explicit instructions on how to assemble your Summerwood Cabana. Extensive diagrams and complete explanations are offered to make assembly easier.

Summerwood Plan Assembly Instructions

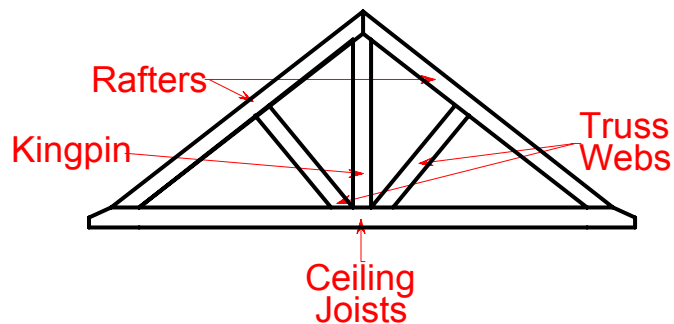


Gable Roof Assembly

Begin by organizing your roof parts into categories, for gable roofs you will have rafters, ceiling joists, kingpins (upright support) and plywood gussets for fastening joints together. On larger gable roofs, they will also come with truss webs. Once you have your parts laid out, identified and checked off, you are ready to begin assembly.

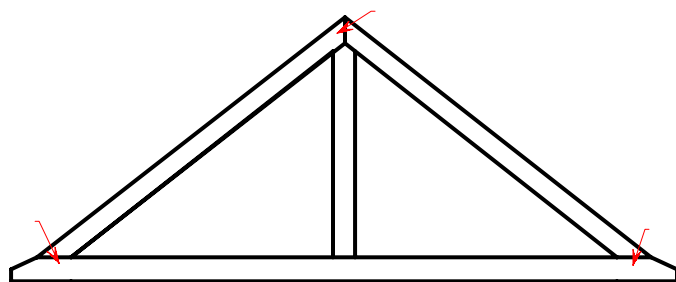
1.

This is what a typical gable truss looks like, keep in mind, smaller units do not require truss webs, and these can only be found on the larger models.



2.

Following the arrows, use 1-3" screws where the arrows are shown to help give your basic frame. Now insert your kingpin and truss webs if required. You may have to play with the truss a bit to acquire a snug fit. Slight gaps between the rafters and kingpin may exist but will close up when the roof is finished and settles.

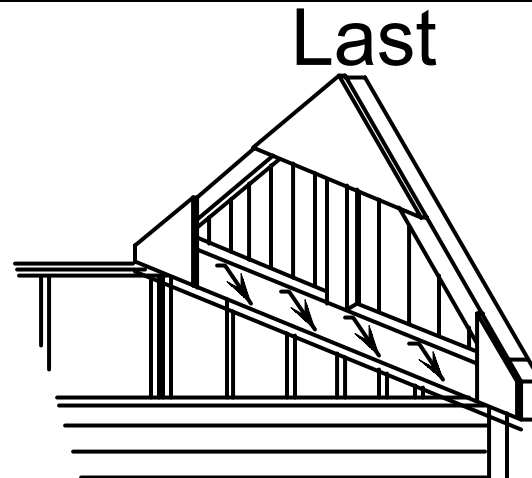


Summerwood Plan Assembly Instructions



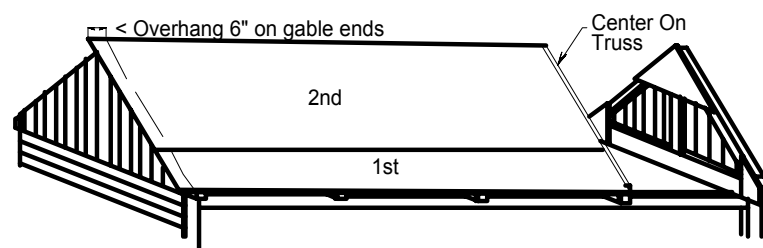
10.

The last trusses put into place should be the outside ones, lift them into place from outside the building and be sure that the siding of the truss comes flush with the siding of the building, there will be a small gap in between which will be covered up with trim later on. Use about 6 – 3” screws on the inside of the building to secure into place, screw on an angle. From either above or below.



11.

Now with your trusses in place, they will seem loose and can sway back and forth. It's not until you placed your roof board into position that the roof will strengthen. Separate your Osb roof board into pieces according to their size. **Roof board should be rough side up.**



Full 4' X 8' sheets are secured on the upper part of the roof, as shown above. When applying the 1st boards leave approx. a “finger width” (below) from the end of the truss to where your roof board begins. Use 2” nails to fasten to truss. Only use a couple nails at first, you'll have to go back over when the roof board is complete and use 2” nails approx. 8” to properly fasten roof board to trusses. The ends of the building should be overhung by the roof board 6”.

Summerwood Plan Assembly Instructions



4. Trim Assembly Instructions

The following instructions provide methods to install all of our Cabana Trim. Trim may vary in sizes and material, but the construction procedure remains the same.



The following pages contain explicit instructions on how to assemble your Summerwood Cabana. Extensive diagrams and complete explanations are offered to make it easier to assemble.

Summerwood Plan Assembly Instructions



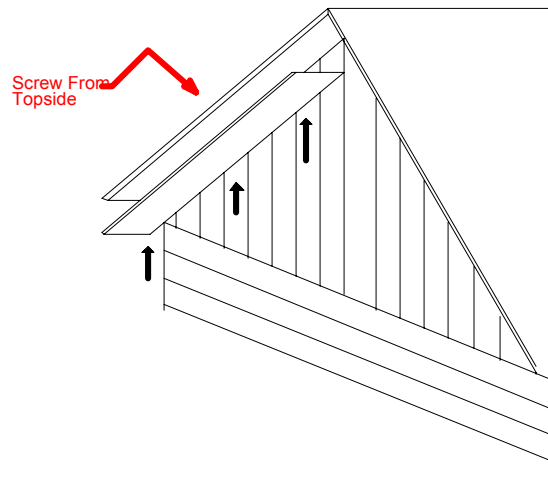
Trim Assembly

Begin by organizing all your trim parts. Separate them by their length and width.

Typically we start with the soffits. Soffits are the cedar trim that are attached to the underside of the rafter ends. On smaller units, the soffits will all be the length of the building. However, on our larger units the soffits will be cut into two or more pieces. They should always meet centered on a rafter. Standard overhang roof's will consist of one course, and extra overhang roof's will have two courses. The cuts can either be made while the piece is nailed into position or it can be cut by measuring and then cutting on the ground. Make a straight cut across, use two 2" nails to fasten into position.

1.

Start with the end soffit, start at least 6 small screws through the top side of the roof wafer board. Lift your soffits into place and hold tight while you screw them into position. Repeat this for all your gable end soffits. At the peak, 1 piece will be tight with wafer and 2nd piece will be tight with the 1st one.



Summerwood Plan Assembly Instructions



The front and back wall fascia are straight forward. Bring them out flush with your end corner caps. Again, your trim will require some cutting. Longer building will require two pieces. Nail one piece into position; hold up 2nd piece and mark then cut. Alternatively you can cut the piece once its in position. Its important to remember that your fascia gets nailed **into** your soffits, and not the rafter ends. Any joints do not necessarily meet on rafter ends. Use 2” nails every 12” to secure into place. It is normal for your fascia to come up past your truss ends.

7.

Identify your skirts, will be full width pieces of trim. They are secure in the same fashion as the fascia; the front and back walls will overhang the side skirts. It will take some cutting and or digging grooves to custom fit the pieces to the grade of the ground. Try to minimize space between the ground and your skirts.



8.